



Product Data Sheet

**Medical
Tap Filter
Side Mount
31 Day**

t-safe.com





Medical Tap Filter Side Mount 31 Day



Features

- Sterilising grade 0.2 µm rated membrane filter
- High capacity filter with up to 31 day life cycle
- Optimised activity space, maintains air gap and reduces backsplashing
- Laminar flow outlet reduces splashing
- Constant flow technology ensures optimal flow performance over life cycle
- Antimicrobial additive protection reduces risk of retrograde contamination
- Integral check valve prevents backflow contamination upstream
- Traceability with GS1 Datamatrix, enabling electronic tracking of filters

Order Information

Item	Code
Laminar flow	02-831203
Laminar flow sterile	02-831207

Technical Data

Max. operating pressure	5 bar
Max. operating temperature	60° C
Flow rate	6 L/min
Max. filter life cycle	31 days*
Connection	Adapter
Colour	White

Microbial retention

Sterilising grade membrane filter, effective against all waterborne pathogens. Independently tested and validated in accordance with ASTM F838 against:

- *Legionella pneumophila*
- *Pseudomonas aeruginosa*
- *Brevundimonas diminuta*

Microbial reduction

T-safe antimicrobial additive is proven to reduce surface bacteria contamination by 99.9%. Independently tested in accordance with ISO 22196.

Approvals

ASTM F838-15A, ISO 22196, WRAS, KIWA, DVGW W270. Compliant with EU food and drinking water directives.

* Dependent on local water quality and usage.

All information contained within this data sheet is based on the current knowledge and experience of T-safe. It is provided in good faith and is intended to serve only as a guideline for the selection and use of products. T-safe products should always be handled in accordance with the applicable Instruction for Use advice. The current data sheet is available at www.t-safe.com.

Instruction for Use



Medical Tap Filter Side Mount 31 & 92 Day



Medical Tap Filter Side Mount 31 & 92 Day

Description

The filter of the T-safe medical product family is based on sterilising grade membrane technology and is specifically designed to remove bacteria such as, but not limited to, *Pseudomonas aeruginosa* and *Legionella pneumophila* from tap water to prevent diseases caused by infections in hospitals and healthcare facilities.

The T-safe Medical Tap Filter Side Mount 31 & 92 Day are complete units, which connects onto a range of T-safe adaptors. In order to use the tap filter a T-safe adaptor must therefore be installed on the tap.

T-safe Medical Tap Filter Side Mount 31 & 92 Day will effectively retain bacteria for a maximum period of up to 31 & 92 Days respectively, within the limitations of use as described herein.

The filter is marked with item no., Lot no. and expiry date, both in GS1 DataMatrix and human-readable text. The filter can be marked with a permanent pen with an installation date.

This IFU covers the following products:

Item	Code
Medical Tap Filter Side Mount 31 Day	02-831203
	02-831207
Medical Tap Filter Side Mount 92 Day	02-831201
	02-831205

Installation

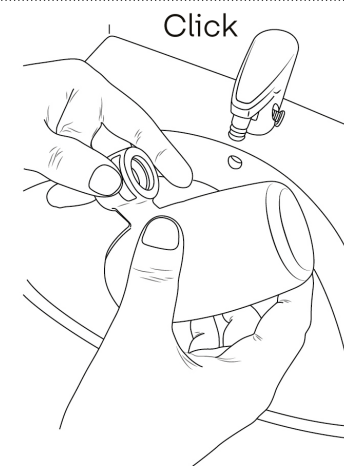
Install the product directly from the packaging and ensure that the filter does not come into contact with sources for contamination before being installed. Please note that the filter should only be used with a original T-safe tap adaptor.

This is only applicable when exchanging the filter on an existing adaptor installation: Before installing the replacement filter, exchange the attached O-ring on the tap adaptor, as to reduce the risk of contaminated water passing by.

Note: Do not touch the filter outlet in order to reduce risk of retrograde contamination!

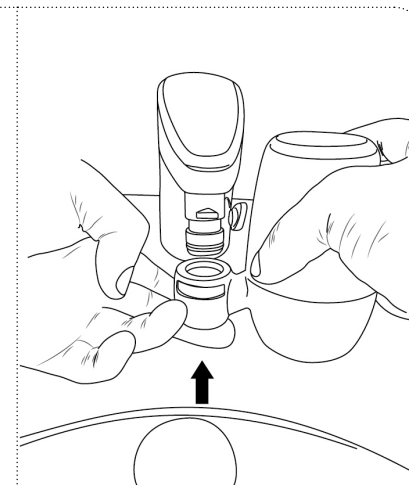
1

Push the locking pawl into open position before installing the tap filter onto the already installed T-safe adaptor. Make sure the grey locking pawl is in the "open" position.



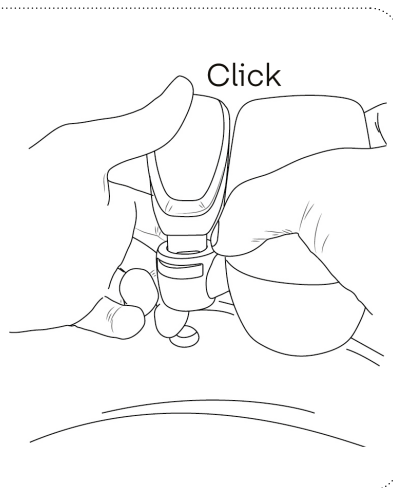
2

Push the tap filter onto the already installed adaptor. Make sure not to touch the outlet of the filter.



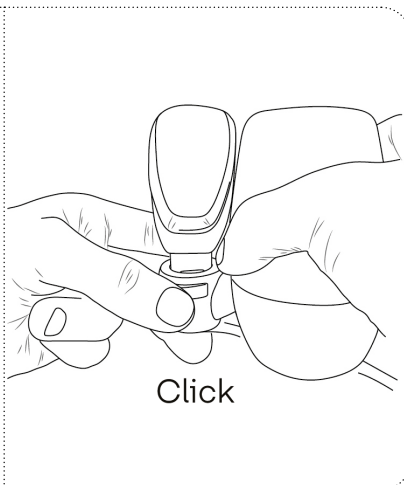
3

Lock the tap filter onto the adaptor by pushing on the back of the locking pawl until the curved shape appears in the front.



4

When exchanging the tap filter simply push the grey locking pawl in order to release the tap filter from the adaptor. Use a disposable bag to package the filter and discard without touching or releasing contaminated water.



Cleaning

If professional cleaning procedures are in place, the external surfaces of the filter may be cleaned using a new disposable wipe e.g. with 1000 ppm chlorine. Extra care should be taken to not contaminate any outlet of the filter, to avoid unintended contamination. Do not disconnect the filter during cleaning.

Exposure to Chemical and Thermal Water Treatment

The filter can tolerate the following continuous disinfection treatments:

- 30 ppm chlorine dioxide
- 15 ppm free chlorine (hypochlorite)
- 10 ppm ozone
- 30 ppm hydrogen peroxide
- 10 ppm chloramine

Shock Treatment:

- Up to 1000 ppm free chlorine for 1 hour at room temperature
- pH 12 for 1 hour at room temperature
- 1000 ppm peracetic acid for 2 hours at 60° C

The filter can tolerate thermal disinfection up to 6 times in the lifetime of the filter under the following conditions:

- 60° C for 20 minutes
- 65° C for 10 minutes
- 70° C for 5 minutes

Important: The filter may not be placed in a hot water bath.

Disposal

The product can be disposed of with ordinary waste following with applicable local regulations under the waste category number 180104 by EU Directive 75/442/EEC.

Storage – non-commissioned filter

The product must be stored at temperatures between 5 °C and 40 °C and at a humidity of max. 60 %. Expiry date: See label on the packaging or marking on the product.

Precautions

- Do not use the filter if the package is open or damaged, or filter is visually damaged
- Do not disconnect the filter during the period of use
- Avoid mechanical impact and do not strike the filter with heavy or metallic objects, as this may damage the filter
- The outlet of the filter should not come into direct contact with skin or hair
- The filter must not be used continuously with water temperatures above 60 °C. The optimal working range is 10 °C – 45 °C
- The filter cannot tolerate pressure above 5 bar
- If the filter is subjected to excessively high water pressure, this will cause the filter to collapse (sudden decrease in water flow). The filter must then be discarded.
- The filter cannot be “backwashed”

- The contamination level and the amount of filter-blocking particles and substances in the water might reduce the lifetime of the filter
- The filter cannot be rinsed or cleaned in a dishwasher or autoclave
- The filter must be discarded if the expiry date has passed
- Do not modify or make changes to the filter or the adapter

NOTE

- Do not use the water for contact lenses
- The quality of the water is not suitable for pharmaceutical use
- The filter will neither alter the taste or odor nor the chemical composition in the water and does not cause any changes in concentration of salts, metals, lime scale, chemicals, pesticides, and dyes

No liability for misprints or typographical errors.



T-safe A/S

Gydevang 1
3450 Allerød
Denmark

t: +45 48 17 22 82
e: info@t-safe.com

t-safe.com